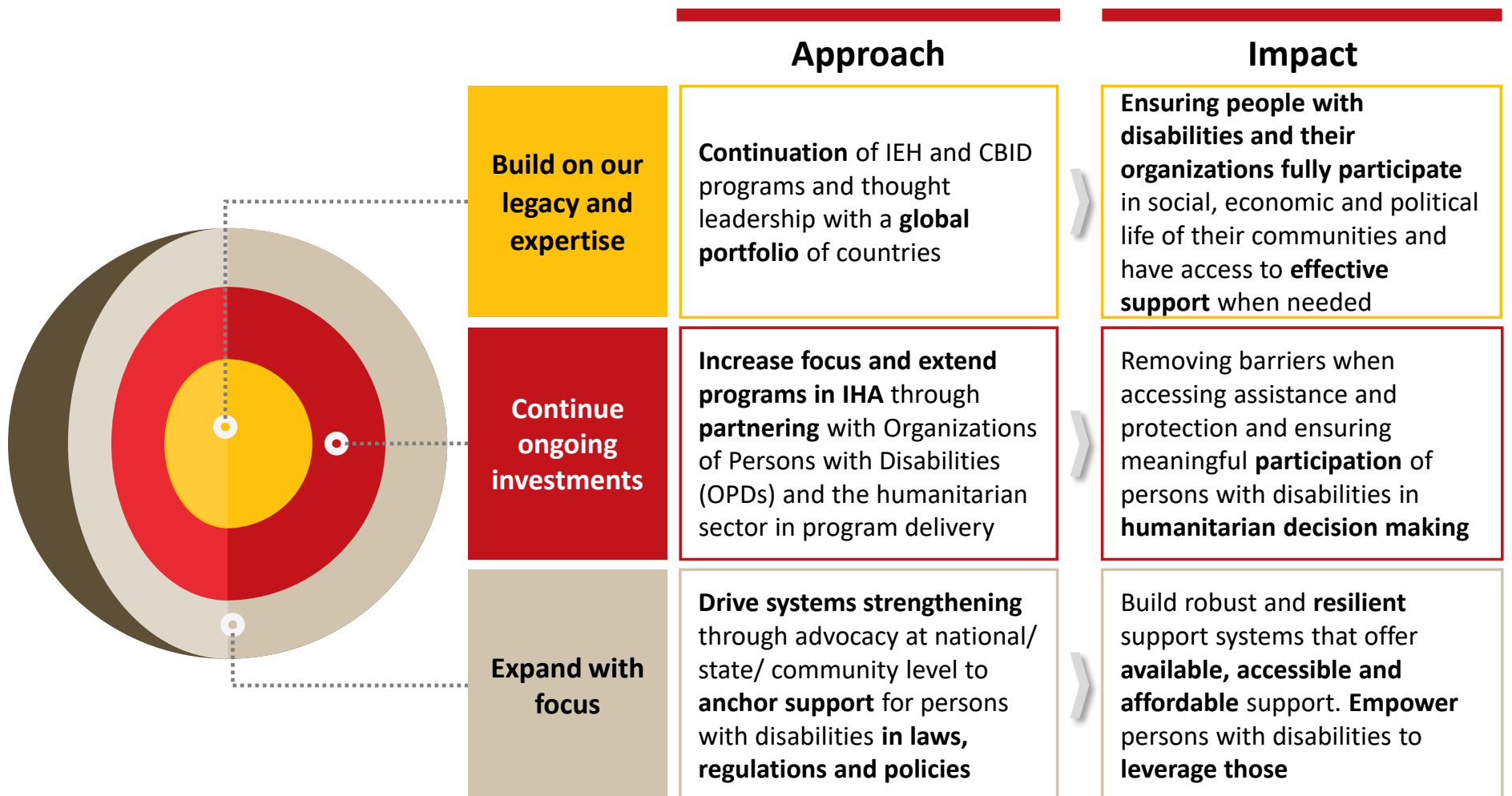


Strategy 2030



The new Strategy 2030 is building on existing capabilities in Inclusive Eye Health (IEH), Inclusive Humanitarian Action (IHA) and Community-Based Inclusive Development (CBID) and expands them with a systems-oriented approach to Community Support Services and Systems (CSS)



Key Strategic objectives to achieve with new strategy



Maximizing Impact

Sustainable, long-term impact for Persons with Disabilities



Being in Sync

Staying true to CBM's brand values through organizational alignment



Ensure Viability

Both financial and operational viability to ensure continuity in a challenging external environment

Funded by Individual Giving & Institutional Donors